



Customer: Colorado Cannabinoids
 Address: 6190 Logan St.
 Denver, CO 80216
 Sample ID: 1000mg 2021 All Flavors T201123001
 Matrix: Tincture
 Labnumber: 21A0217-01



Density (g/mL): 0.959

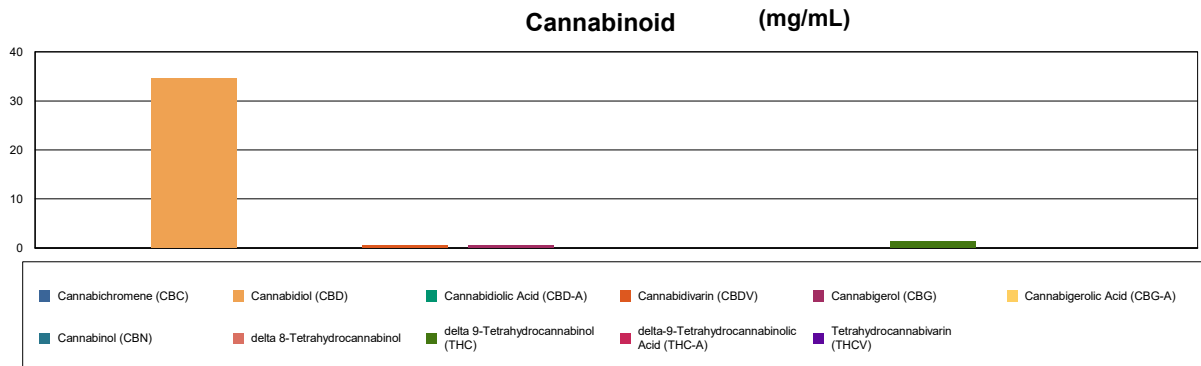
Cannabinoid Profile

Test Conditions: 20°C
 Extraction Technician: SH
 Analytical Chemist: SH

Extraction Date(s)	Analysis Date(s)
1/11/2021	1/12/2021

Cannabinoids (HPLC)		Results	
	LOD (mg/mL)	%	mg/mL
Cannabidiol (CBD)		3.46	34.6
Cannabidiol (CBD)		3.46	34.6
Cannabidiolic Acid (CBD-A)	<0.20		
Cannabigerolic Acid (CBG-A)	<0.20		
Cannabigerol (CBG)		0.05	0.519
Cannabidivarin (CBDV)		0.04	0.413
Tetrahydrocannabivarin (THCV)	<0.20		
Cannabinol (CBN)	<0.20		
delta 9-Tetrahydrocannabinol (THC)		0.12	1.24
delta 8-Tetrahydrocannabinol	<0.20		
Cannabichromene (CBC)	<0.20		
delta-9-Tetrahydrocannabinolic Acid (THC-A)	<0.20		
Cannabinoids Total		%	mg/mL
Max Active THC		0.12	1.24
Max Active CBD		3.46	34.60
T.Active Cannabinoids		3.64	36.40
Total Cannabinoids		3.68	36.80

Following USDA guidelines on uncertainty, Altitude Consulting's uncertainty is calculated to be +/- 2% for all cannabinoids using a coverage factor of 2 (95% confidence interval). Measurement uncertainty has not been factored into reported values.



Gary Brook - Laboratory Director - 1/12/2021

Reporting Limits will vary based on sample extraction weight used for the analysis.

Altitude Consulting, LLC utilizes NIST traceable Reference Standards and Certified Reference Material to calibrate analytical instruments along with proven analytical methods. The methods are applied in the most ethical manner following good laboratory practice guidelines. The results of this report are based solely on the sample submitted and cannot be reproduced. Decision Rule: Measurement uncertainty is not accounted for in the reported values. Results are based solely on calculated numbers. Altitude Consulting makes no Statements of conformity.



Customer: Colorado Cannabinoids
 Address: 6190 Logan St.
 Denver, CO 80216
 Sample ID: 1000mg 2021 All Flavors T201123001
 Matrix: Tincture
 Labnumber: 21A0217-01



Density (g/mL): 0.959

Residual Solvents Profile

Test Conditions: 20°C
 Extraction Technician: SH
 Analytical Chemist: CB

Extraction Date(s)	Analysis Date(s)
1/11/2021	1/12/2021

Residual Solvents (GC/MS)	Results
	ug/mL
Propane	<93.8
Isobutane	<93.8
Methanol	<93.8
Butane	<93.8
Isopropanol	<93.8
Ethanol	<93.8
2-Methyl Butane	<93.8
Acetonitrile	<93.8
Acetone	<93.8
n-Pentane	<93.8
n-Hexane	<46.9
Tetrahydrofuran	<93.8
Benzene	<0.938
n-Heptane	<93.8
Toluene	<93.8
Ethylbenzene	<93.8
m+p Xylene	<93.8
o-Xylene	<93.8

Gary Brook - Laboratory Director - 1/12/2021

Reporting Limits will vary based on sample extraction weight used for the analysis.

Altitude Consulting, LLC utilizes NIST traceable Reference Standards and Certified Reference Material to calibrate analytical instruments along with proven analytical methods. The methods are applied in the most ethical manner following good laboratory practice guidelines. The results of this report are based solely on the sample submitted and cannot be reproduced. Decision Rule: Measurement uncertainty is not accounted for in the reported values. Results are based solely on calculated numbers. Altitude Consulting makes no Statements of conformity.



Customer: Colorado Cannabinoids
Address: 6190 Logan St.
 Denver, CO 80216
Sample ID: 3000mg 2021 All Flavors T201123002
Matrix: Tincture
Labnumber: 21A0217-02



Density (g/mL): 0.959

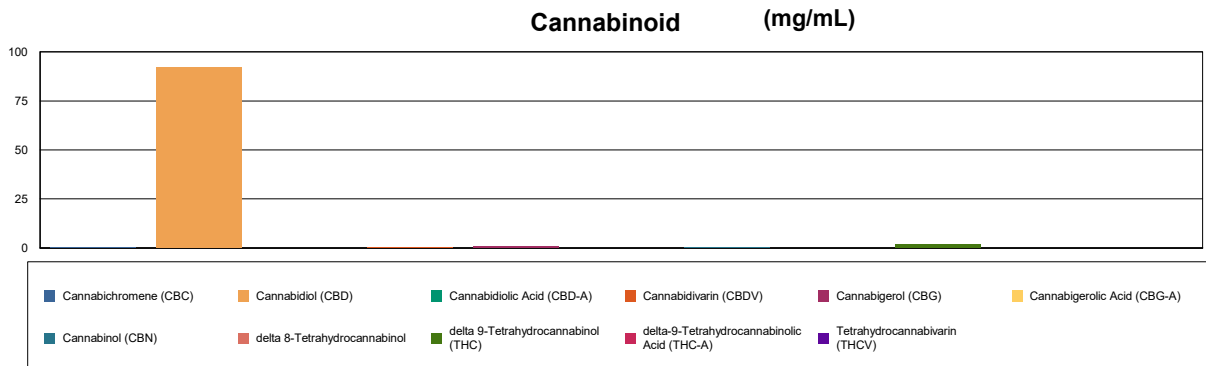
Cannabinoid Profile

Test Conditions: 20°C
Extraction Technician: SH
Analytical Chemist: SH

Extraction Date(s)	Analysis Date(s)
1/11/2021	1/12/2021

Cannabinoids (HPLC)		Results	
	LOD (mg/mL)	%	mg/mL
Cannabidivarin (CBDV)		0.05	0.507
Cannabidiolic Acid (CBD-A)	<0.20		
Cannabigerolic Acid (CBG-A)	<0.20		
Cannabigerol (CBG)		0.07	0.735
Cannabidiol (CBD)		9.22	92.2
Tetrahydrocannabivarin (THCV)	<0.20		
Cannabinol (CBN)		0.02	0.151
delta 9-Tetrahydrocannabinol (THC)		0.17	1.74
delta 8-Tetrahydrocannabinol	<0.20		
Cannabichromene (CBC)		0.02	0.225
delta-9-Tetrahydrocannabinolic Acid (THC-A)	<0.20		
Cannabinoids Total		%	mg/mL
Max Active THC		0.17	1.74
Max Active CBD		9.22	92.20
T.Active Cannabinoids		9.51	95.10
Total Cannabinoids		9.56	95.60

Following USDA guidelines on uncertainty, Altitude Consulting's uncertainty is calculated to be +/- 2% for all cannabinoids using a coverage factor of 2 (95% confidence interval). Measurement uncertainty has not been factored into reported values.



Gary Brook - Laboratory Director - 1/12/2021

Reporting Limits will vary based on sample extraction weight used for the analysis.

Altitude Consulting, LLC utilizes NIST traceable Reference Standards and Certified Reference Material to calibrate analytical instruments along with proven analytical methods. The methods are applied in the most ethical manner following good laboratory practice guidelines. The results of this report are based solely on the sample submitted and cannot be reproduced. Decision Rule: Measurement uncertainty is not accounted for in the reported values. Results are based solely on calculated numbers. Altitude Consulting makes no Statements of conformity.



Customer: Colorado Cannabinoids
 Address: 6190 Logan St.
 Denver, CO 80216
 Sample ID: 3000mg 2021 All Flavors T201123002
 Matrix: Tincture
 Labnumber: 21A0217-02

Density (g/mL): 0.959



Residual Solvents Profile

Test Conditions: 20°C
 Extraction Technician: SH
 Analytical Chemist: CB

Extraction Date(s)	Analysis Date(s)
1/11/2021	1/12/2021

Residual Solvents (GC/MS)	Results
	ug/mL
Propane	<90.3
Isobutane	<90.3
Methanol	<90.3
Butane	<90.3
Isopropanol	<90.3
Ethanol	<90.3
2-Methyl Butane	<90.3
Acetonitrile	<90.3
Acetone	<90.3
n-Pentane	<90.3
n-Hexane	<45.2
Tetrahydrofuran	<90.3
Benzene	<0.903
n-Heptane	<90.3
Toluene	<90.3
Ethylbenzene	<90.3
m+p Xylene	<90.3
o-Xylene	<90.3

Gary Brook - Laboratory Director - 1/12/2021

Reporting Limits will vary based on sample extraction weight used for the analysis.

Altitude Consulting, LLC utilizes NIST traceable Reference Standards and Certified Reference Material to calibrate analytical instruments along with proven analytical methods. The methods are applied in the most ethical manner following good laboratory practice guidelines. The results of this report are based solely on the sample submitted and cannot be reproduced. Decision Rule: Measurement uncertainty is not accounted for in the reported values. Results are based solely on calculated numbers. Altitude Consulting makes no Statements of conformity.



Customer: Colorado Cannabinoids
 Address: 6190 Logan St.
 Denver, CO 80216
 Sample ID: CBD/CBG Pre Rolls 3-Pack
 Matrix: Biomass
 Labnumber: 21A0217-03



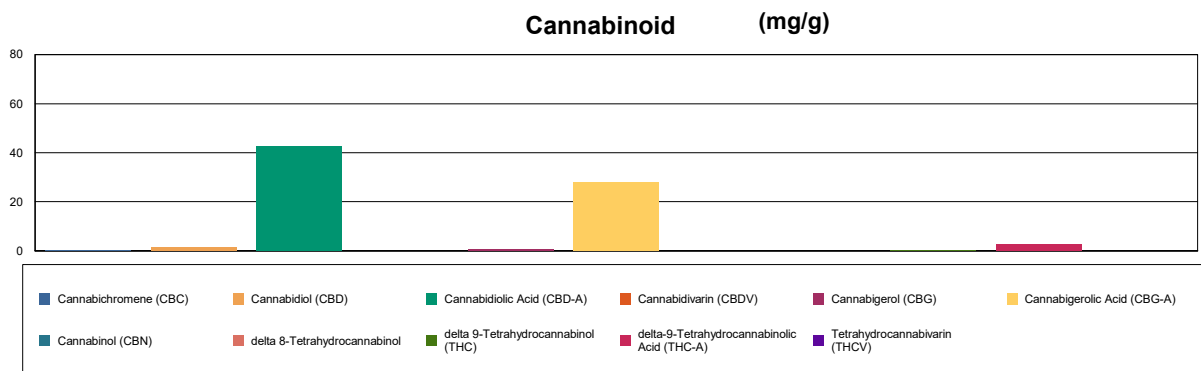
Cannabinoid Profile

Test Conditions: 20°C
 Extraction Technician: SH
 Analytical Chemist: SH

Extraction Date(s)	Analysis Date(s)
1/11/2021	1/12/2021

Cannabinoids (HPLC)		Results	
	LOD (mg/g)	%	mg/g
Cannabidivarin (CBDV)	<0.20		
Cannabidiolic Acid (CBD-A)		4.27	42.7
Cannabigerolic Acid (CBG-A)		2.80	28
Cannabigerol (CBG)		0.06	0.6
Cannabidiol (CBD)		0.15	1.5
Tetrahydrocannabivarin (THCV)	<0.20		
Cannabinol (CBN)	<0.20		
delta 9-Tetrahydrocannabinol (THC)		0.03	0.3
delta 8-Tetrahydrocannabinol	<0.20		
Cannabichromene (CBC)		0.04	0.4
delta-9-Tetrahydrocannabinolic Acid (THC-A)		0.25	2.5
Cannabinoids Total		%	mg/g
Max Active THC		0.25	2.55
Max Active CBD		3.89	38.91
T.Active Cannabinoids		0.29	2.88
Total Cannabinoids		7.61	76.10

Following USDA guidelines on uncertainty, Altitude Consulting's uncertainty is calculated to be +/- 2% for all cannabinoids using a coverage factor of 2 (95% confidence interval). Measurement uncertainty has not been factored into reported values.



Gary Brook - Laboratory Director - 1/12/2021

Reporting Limits will vary based on sample extraction weight used for the analysis.

Altitude Consulting, LLC utilizes NIST traceable Reference Standards and Certified Reference Material to calibrate analytical instruments along with proven analytical methods. The methods are applied in the most ethical manner following good laboratory practice guidelines. The results of this report are based solely on the sample submitted and cannot be reproduced. Decision Rule: Measurement uncertainty is not accounted for in the reported values. Results are based solely on calculated numbers. Altitude Consulting makes no Statements of conformity.